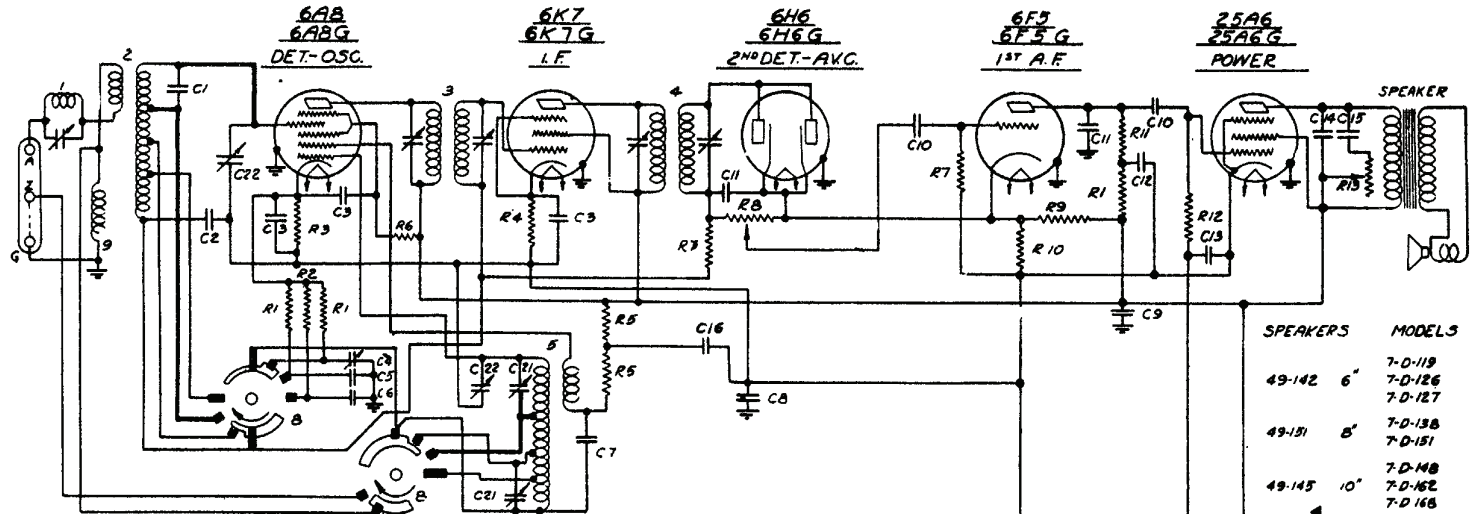
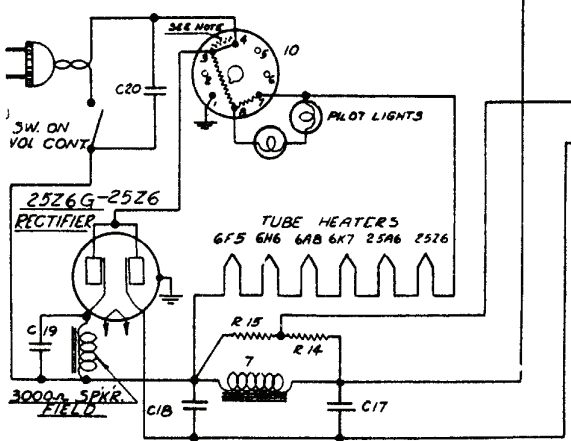


CIRCUIT DIAGRAM—Models 7-D-119, 7-D-126, 7-D-127, 7-D-138, 7-D-151, 7-D-148, 7-D-162, 7-D-168. (Chassis No. 5707)



DIAG NO	PART NO	DESCRIPTION	DIAG NO	PART NO	DESCRIPTION	
C1	22-309	5M MFD	600V R12	63-290	260M OHMS 1/4W	
C2	22-487	05 MFD	400V R13	63-521	50MΩ TONE CONT	
C3	22-250	05 MFD	200V R14	63-188	650M OHMS 1/4W	
C4	22-208	200-850MMFD	OSC. PADDER	R18	63-451	800M OHMS 1/4W
C5	22-384	005 MFD	600V			
C6	22-485	005 MFD	600V			
C7	22-486	005 MFD	600V			
C8	22-390	25 MFD	200V			
C9	22-212	05 MFD	400V			
C10	22-188	02 MFD	400V	1	20-133	WAVE TRAP
C11	22-162	000 MFD	600V	2	3-4343	ANT. COIL ASSEMBLY
C12	22-190	1 MFD	200V	3	95-358	1ST I.F. TRANS.
C13	22-467	2 MFD	200V	4	95-359	2ND I.F. TRANS.
C14	22-219	005 MFD	600V	5	3-4344	OSC. COIL ASSEMBLY
C15	22-170	1 MFD	500V	6	85-33	PHONO SWITCH
C16	22-315	4 MFD DRY ELCC	250V	7	95-348	POWER CHOKER
C17	22-314	8 MFD	250V	8	85-83	BAND SEL SWITCH
C18	22-314	16 MFD	250V	9	20-134	ANT. CHOKER
C19	22-314	4 MFD	250V	10	100-38	BALLAST TUBE 117V
C20	22-455	21 MFD	1500V	100-45	BALLAST TUBE 123V	
C21	22-405	2-35MMFD	TRIMMER	100-46	BALLAST TUBE 150V	
C22	22-482	VARIABLE		100-47	BALLAST TUBE 200V	
				100-48	BALLAST TUBE 250V	
				11	44-7	PHONO JACK



SPEAKERS	MODELS
49-142	6"
	7-D-119
	7-D-126
	7-D-127
49-151	5"
	7-D-138
	7-D-151
	7-D-148
49-145	10"
	7-D-162
	7-D-168

CIRCUIT CHANGES FOR PHONOGRAPH
 I.F. FREQUENCY 456 K.C.
 7 TUBE SUPERHETERODYNE
 CHASSIS NO 5707 AC-DC.

ZENITH RADIO CORP

NOTE:
 PINS 3&4 SHORT
 CIRCUITED INTERNALLY
 IN 100-38, 100-45
 AND 100-48 ONLY